

RINCOMATIC SYMA32 INGLETE + SYMA2 INGLETE

SALES FORMAT:
CUSTOM-FITTED



How to build the product part number and what specifications to take into consideration

Syma32 Inglete Profile Handle



PART NUMBER:

TIRSY32I **XX** mm

XX color code:

35 matt silver

50 matt inox champagne

52 gloss black

52M matt black

01 gloss white

01M matt white

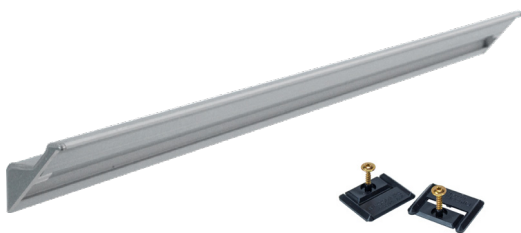
60 anthracite

mm Handle length

 24 u.

EXAMPLE: TIRSY32I**35598** - Syma32 Inglete custom-fitted handle silver matt 598 mm

Syma2 Inglete Profile Handle



PART NUMBER:

TIRSY2I **XX** mm

XX color code:

35 matt silver

50 matt inox champagne

52 gloss black

52M matt black

01 gloss white

01M matt white

60 anthracite

mm Handle length

 24 u.

EXAMPLE: TIRSY2I**35598** - Syma2 Inglete custom-fitted handle silver matt 598 mm