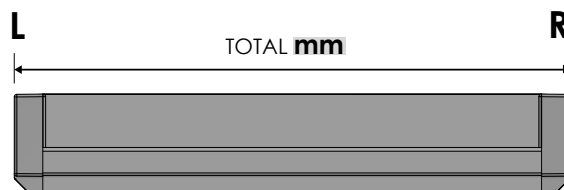


# RINCOMATIC SYMA32 INTEGRATED TOTAL

SALES FORMAT:  
CUSTOM-FITTED



How to build the product part number and what specifications to take into consideration

Part number:

**TIRSY32CC** **XX** **mm**

**XX** color code

**35** matt silver


**50** matt inox champagne

**60** anthracite

**52M** matt black

**01M** matt white

**mm** Handle length

 20 u.

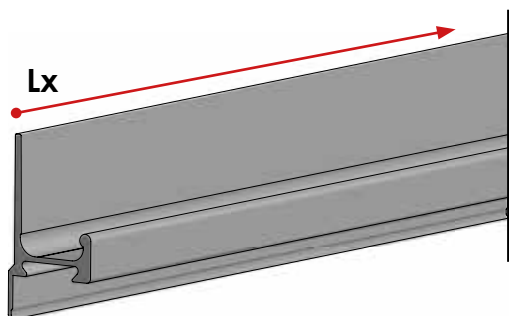
# RINCOMATIC SYMA32 INTEGRATED TOTAL

SALES FORMAT:  
IN PARTS - DIY



How to build the product part number and what specifications to take into consideration

## Syma32 Profile Handle



Part number:

TTIRSY32 **XX** mm P

**XX** color code  
35 silver matt  
50 matt inox champagne  
60 anthracite  
52M matt black  
01M matt white

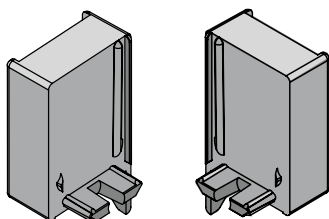
**mm** Handle length

**L1:** 2950 mm

**L2:** 2670 mm

 20 u.


## Pair of caps SYMA32 Integrated-Total (Interior LEFT + Interior RIGHT)



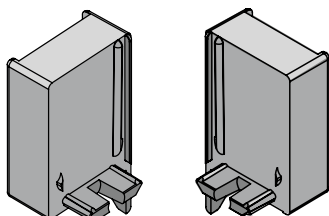
Part number:

BTERSY32CC **XX**

**XX** color code  
35 silver matt  
50 matt inox champagne  
60 anthracite  
52M matt black  
01M matt white

 25 u.


## Pair of caps SYMA32 Integrated-Total (Interior LEFT + Interior RIGHT)



Part number:

PTERSY32CC **XX**

**XX** color code  
35 silver matt  
50 matt inox champagne  
60 anthracite  
52M matt black  
01M matt white

 100 u.