

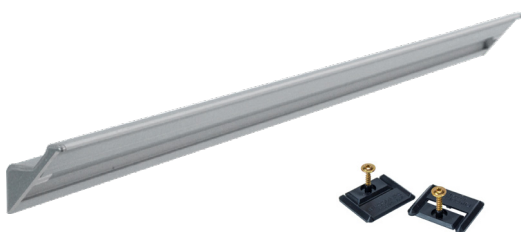
# RINCOMATIC SYMA32 INGLETE + SYMA2 INGLETE

SALES FORMAT:  
**CUSTOM-FITTED**



How to build the product part number and what specifications to take into consideration

## Syma2 Inglete Profile Handle



PART NUMBER:

TIRSY2I **XX** **mm**

**XX** color code:

**35** matt silver

**50** matt inox champagne

**52** gloss black

**52M** matt black

**01** gloss white

**01M** matt white

**60** anthracite

**mm** Handle length

 24 u.

**EXAMPLE:** TIRSY2I**35598** - Syma2 Inglete custom-fitted handle silver matt 598 mm