



El tirador de perfil **SymaG-32** permite conseguir ambientes de cocina modernos estilo Gola, optimizando al máximo el acceso al interior del mueble. Su diseño en forma de "G" facilita la apertura de puertas y cajones a través de un agarre interior.

SymaG-32 Profile Handle enables to achieve Gola modern kitchen projects maximizing the access to the cabinet. Its "G" shape design facilitates opening of doors and drawers by pulling the handle from inside.

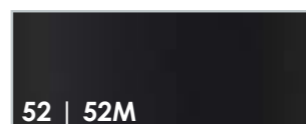
Acabados | Finishes



35
Plata Mate
Matt silver



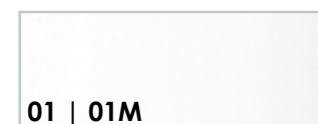
50
Inox Mate - Champagne
Matt Inox - Champagne



52 | 52M
Negro Brillo | Negro Mate
Gloss Black | Matt Black



60
Antracita
Anthracite



01 | 01M
Blanco Brillo | Blanco Mate
Gloss White | Matt White

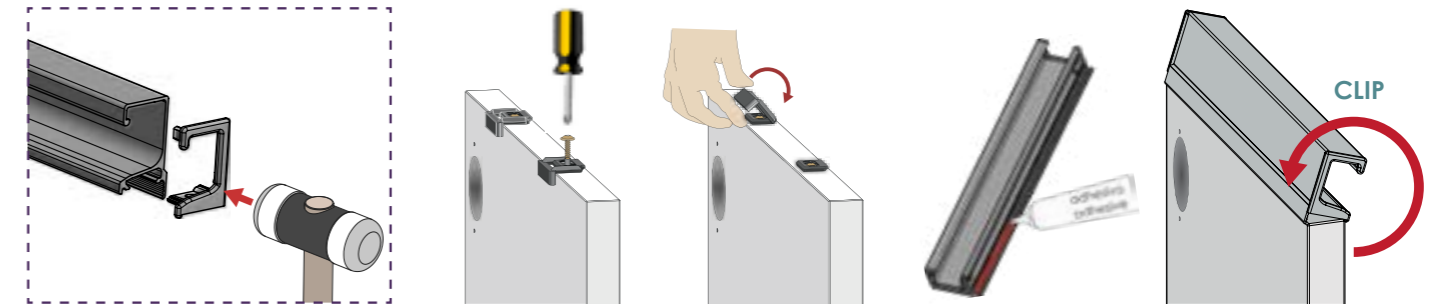


70M
Oro Mate
Matt Gold



04
Efecto Cromo
Chrome effect

CLIP-SYSTEM Instalación | Installation



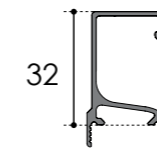
Por componentes | In parts - DIY



Válido para grueso tablero 19 mm (3/4 in)
L1 Perfil 2950 mm
L2 Perfil 2670 mm (105 1/8 in)

Valid for board thickness 19 mm (3/4 in)
L1 Profile 2950 mm
L2 Profile 2670 mm (105 1/8 in)

SymaG-32 Perfil | Profile



Pareja terminales (L+R) + Clips + tornillos
Pair end caps (L+R) + Clips + screws



Tirador a medida | Custom-Made Handle

L? Solicite medida exacta
Ask for exact length



Syma32-G



¿Cómo hacer tu pedido?
How to place your order?

