



SymaG-32 Profile Handle enables to achieve Gola modern kitchen projects maximizing the access to the cabinet. Its "G" shape design facilitates opening of doors and drawers by pulling the handle from inside.

El tirador de perfil **SymaG-32** permite conseguir ambientes de cocina modernos Gola, optimizando al máximo el acceso al interior del mueble. Su diseño en forma de "G" facilita la apertura de puertas y cajones a través de un agarre interior.

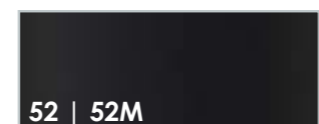
Finishes | Acabados



35
Matt silver
Plata Mate



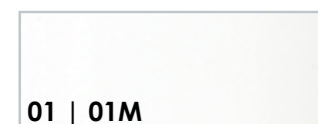
50
Matt Inox - Champagne
Inox Mate - Champagne



52 | 52M
Gloss Black | Matt Black
Negro Brillo | Negro Mate



60
Anthracite
Antracita



01 | 01M
Gloss White | Matt White
Blanco Brillo | Blanco Mate

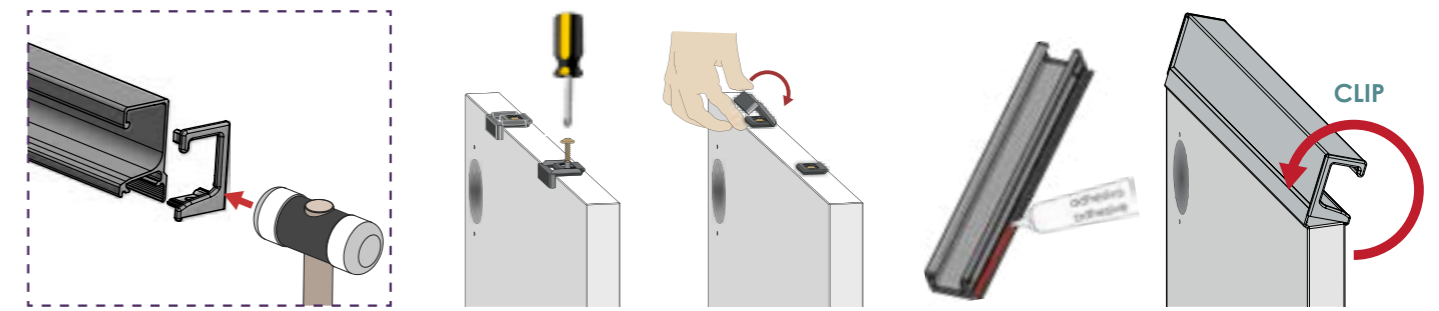


70M
Matt Gold
Oro Mate



04
Chrome effect
Efecto Cromo

CLIP-SYSTEM Installation | Instalación



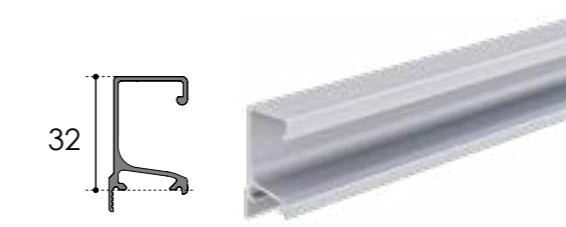
In parts - DIY | Por componentes



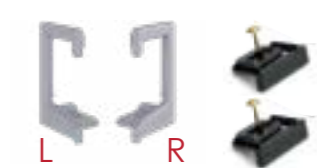
Valid for board thickness ≥ 16 mm (5/8 in)
L1 Profile 2950 mm
L2 Profile 2670 mm (105 1/8 in)

Válido para grueso tablero ≥ 16 mm (5/8 in)
L1 Perfil 2950 mm
L2 Perfil 2670 mm (105 1/8 in)

Syma32 Profile | Perfil

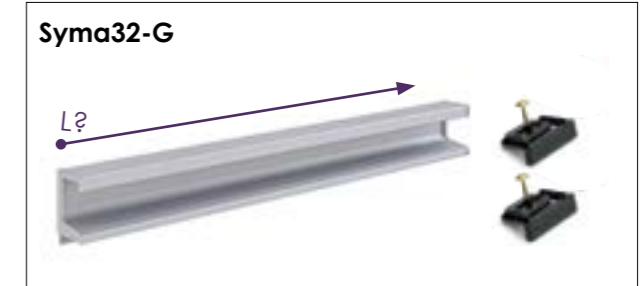


Pair end caps (L+R) + Clips + screws
Pareja terminales (L+R) + Clips + tornillos



Tirador a medida | Custom-Made Handle

L? Ask for exact length
Solicite medida exacta



**How to place your order?
¿Cómo hacer tu pedido?**

