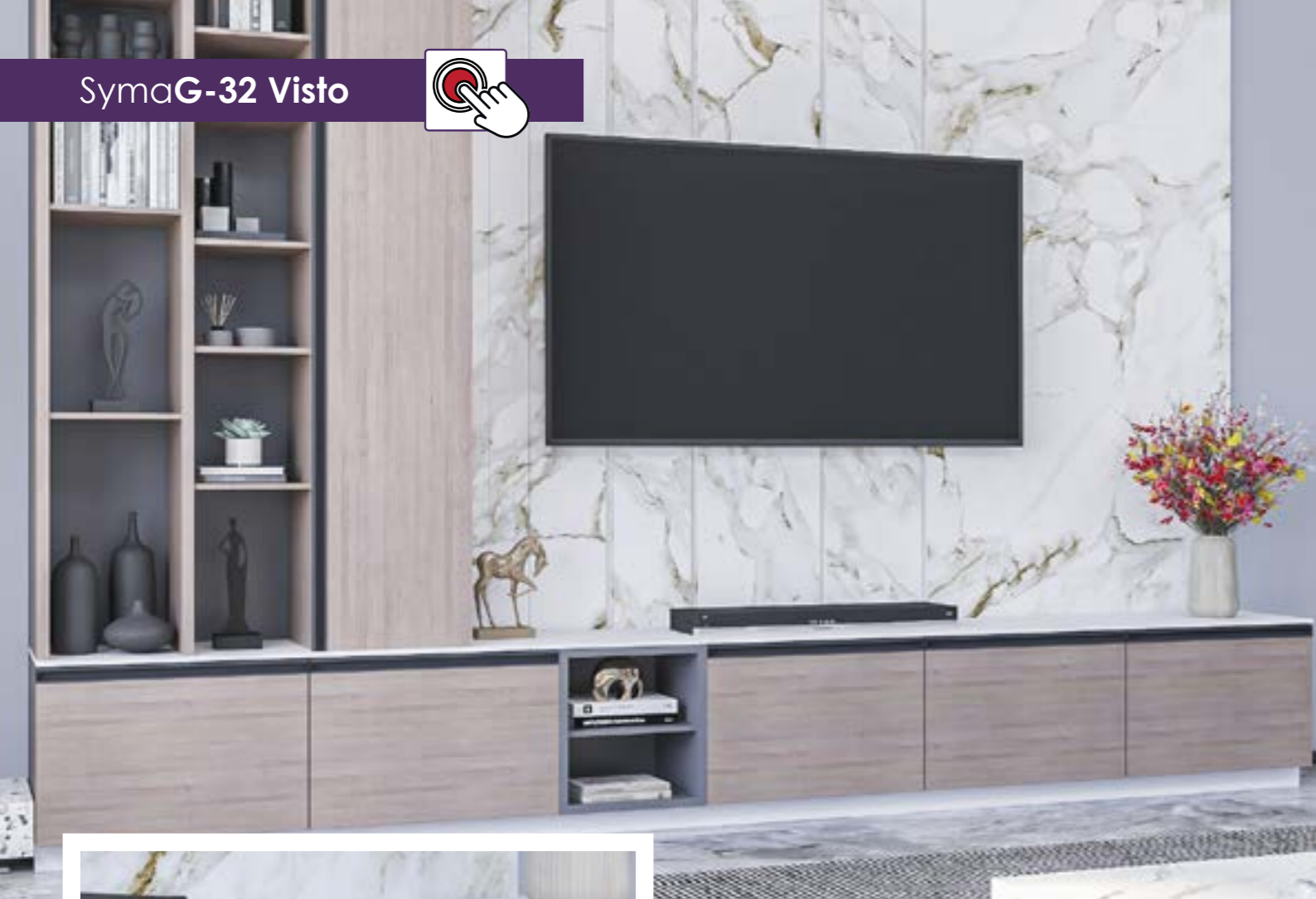


SymaG-32 Visto



The combination of **Syma32** profile handle with its complementary **Syma14** simulates a gola style allowing an independent opening between the upper and lower front.

La combinación del tirador de perfil Rincomatic **Syma32** con su complementario Rincomatic **Syma14** simula un estilo gola, permitiendo una apertura independiente entre el frente superior e inferior.

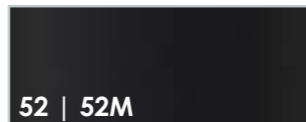
Finishes | Acabados



35
Matt silver
Plata Mate



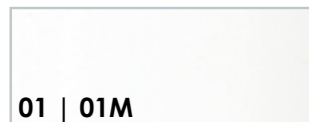
50
Matt Inox - Champagne
Inox Mate - Champagne



52 | 52M
Gloss Black | Matt Black
Negro Brillo | Negro Mate



60
Anthracite
Antracita



01 | 01M
Gloss White | Matt White
Blanco Brillo | Blanco Mate

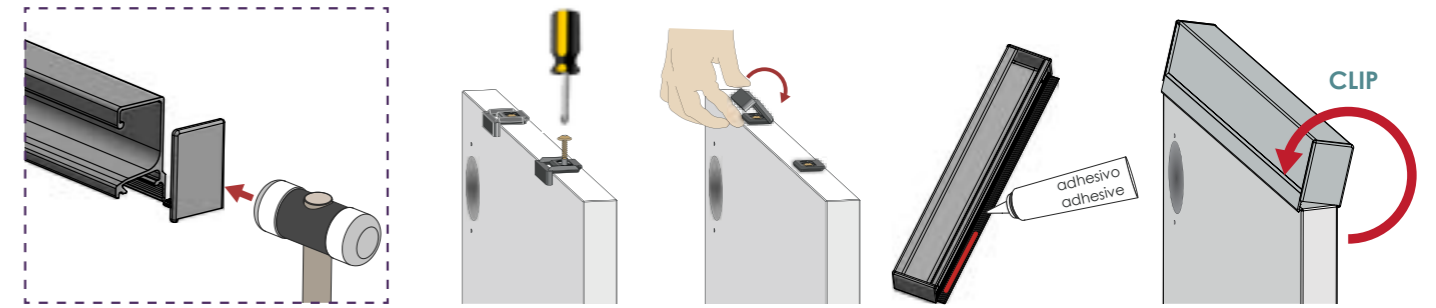


70M
Matt Gold
Oro Mate



04
Chrome effect
Efecto Cromo

CLIP-SYSTEM Installation | Instalación



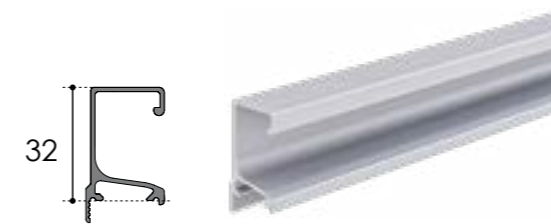
In parts - DIY | Por componentes



Valid for board thickness ≥ 16 mm (5/8 in)
L1 Profile 2950 mm
L2 Profile 2670 mm (105 1/8 in)

Válido para grueso tablero ≥ 16 mm (5/8 in)
L1 Perfil 2950 mm
L2 Perfil 2670 mm (105 1/8 in)

Syma32 Profile | Perfil

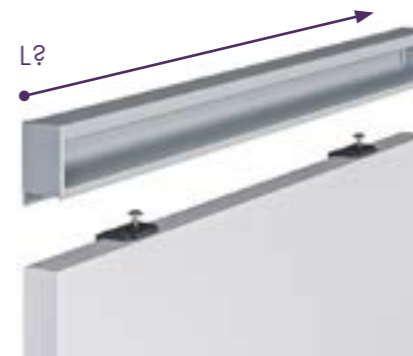


Pair end caps (L+R) + Clips + screws Pareja terminales (L+R) + Clips + tornillos

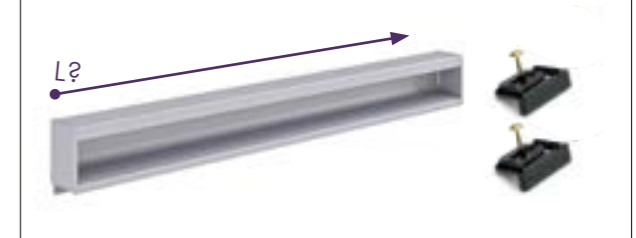


Tirador a medida | Custom-Made Handle

Ask for exact length
Solicite medida exacta



SymaG-32 Visto



How to place your order?
¿Cómo hacer tu pedido?

