

# Syma32 + Syma14



The combination of **Syma32** profile handle with its complementary **Syma14** simulates a gola style allowing an independent opening between the upper and lower front.

La combinación del tirador de perfil Rincomatic **Syma32** con su complementario Rincomatic **Syma14** simula un estilo gola, permitiendo una apertura independiente entre el frente superior e inferior.

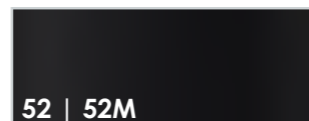
## Finishes | Acabados



35  
Matt silver  
Plata Mate



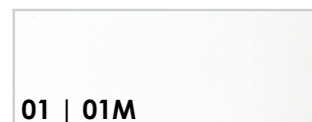
50  
Matt Inox - Champagne  
Inox Mate - Champagne



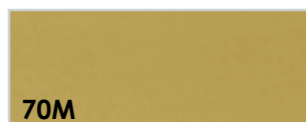
52 | 52M  
Gloss Black | Matt Black  
Negro Brillo | Negro Mate



60  
Anthracite  
Antracita



01 | 01M  
Gloss White | Matt White  
Blanco Brillo | Blanco Mate

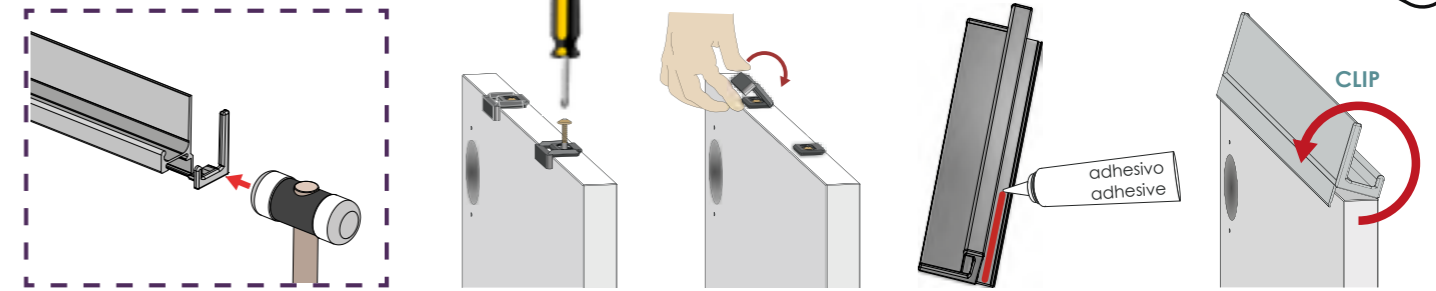


70M  
Matt Gold  
Oro Mate

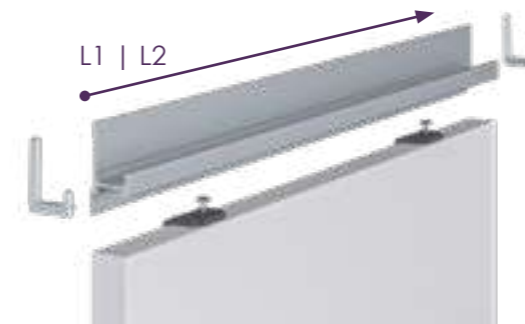


04  
Chrome effect  
Efecto Cromo

## CLIP-SYSTEM Installation | Instalación



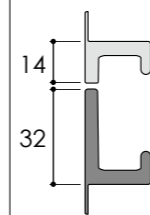
## In parts - DIY | Por componentes



Valid for board thickness  $\geq 16$  mm (5/8 in)  
L1 Profile 2950 mm  
L2 Profile 2670 mm (105 1/8 in)

Válido para grueso tablero  $\geq 16$  mm (5/8 in)  
L1 Perfil 2950 mm  
L2 Perfil 2670 mm (105 1/8 in)

### Syma32 Profile | Perfil

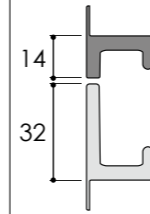


### Pair end caps (L+R) + Clips + screws

Pareja terminales (L+R) + Clips + tornillos



### Syma14 Profile | Perfil



### Pair end caps (L+R) + Clips + screws

Pareja terminales (L+R) + Clips + tornillos



## Tirador a medida | Custom-Made Handle



Ask for exact length  
Solicite medida exacta



### Syma32

L?



### Syma14

L?



ENG



How to place your order?  
¿Cómo hacer tu pedido?

ESP

