

Syma32 Inglete + Syma2 Inglete



Syma32 Inglete integrated profile handle and its counterpart **Syma2 Inglete** is an elegant couple of angled aluminum finger pulls that can be used in conjunction with each other to create a Gola C-channel look.

El tirador integrado de perfil **Syma32 Inglete** y su complementario **Syma2 Inglete** son una elegante pareja de tiradores de perfil que se pueden combinar para simular un diseño gola.

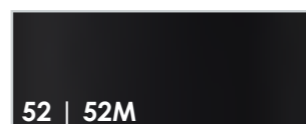
Finishes | Acabados



35
Matt silver
Plata Mate



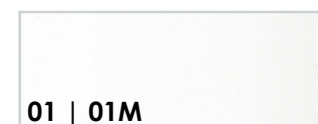
50
Matt Inox - Champagne
Inox Mate - Champagne



52 | 52M
Gloss Black | Matt Black
Negro Brillo | Negro Mate



60
Anthracite
Antracita



01 | 01M
Gloss White | Matt White
Blanco Brillo | Blanco Mate

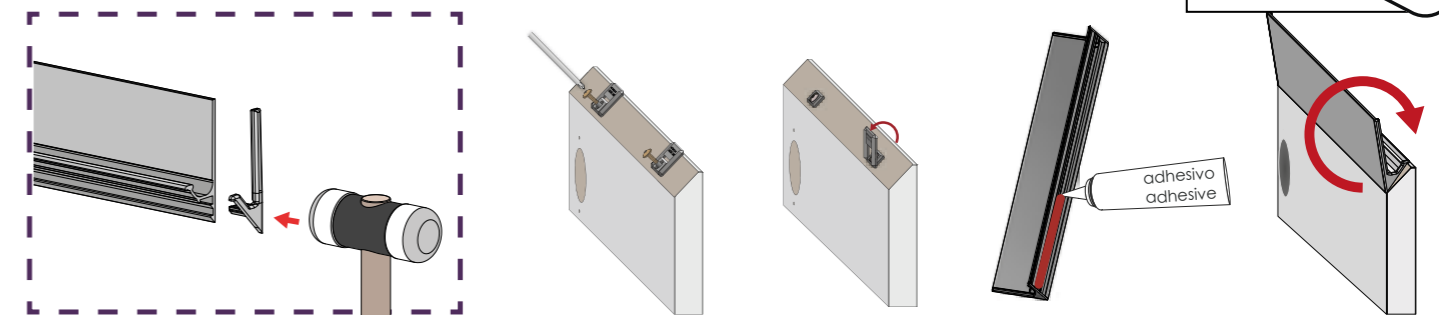


70M
Matt Gold
Oro Mate



04
Chrome effect
Efecto Cromo

CLIP-SYSTEM Installation | Instalación



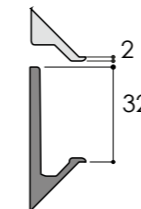
In parts - DIY | Por componentes



Valid for board thickness ≥ 16 mm (5/8 in)
L1 Profile 2950 mm
L2 Profile 2670 mm (105 1/8 in)

Válido para grueso tablero ≥ 16 mm (5/8 in)
L1 Perfil 2950 mm
L2 Perfil 2670 mm (105 1/8 in)

Syma32 Inglete Profile | Perfil

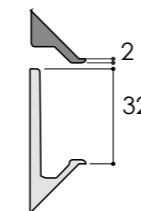


Pair end caps (L+R) + Clips + screws

Pareja terminales (L+R) + Clips + tornillos



Syma2 Inglete Profile | Perfil



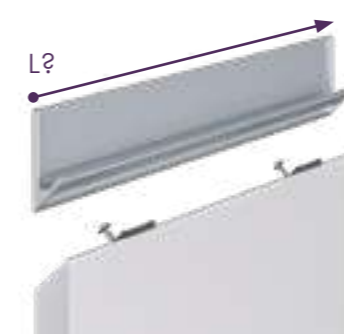
Pair end caps (L+R) + Clips + screws

Pareja terminales (L+R) + Clips + tornillos



Custom-Made Handle | Tirador a medida

L? Ask for exact length
Solicite medida exacta



Syma32 Inglete



Syma2 Inglete

