

Flat gola | Gola Plano



Syma2 inglete



Sugo



Finishes | Acabados

35	50	60	52/52M	01/01M	70M
Matt Silver Plata mate	Matt inox Champ. Inox mate Champ.	Anthracite Antracita	Black: gloss / matt Negro: brillo / mate	White: gloss / matt Blanco: brillo / mate	Matt Gold Oro Mate

Upper-Side Profile | Perfil Superior-Lateral

(L1) 2950 mm | (L2) 2670 mm (105 1/8 in)



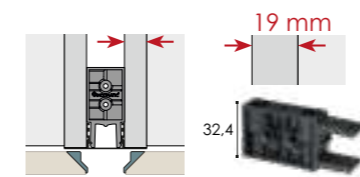
Intermediate Profile | Perfil Intermedio

(L1) 2950 mm | (L2) 2670 mm (105 1/8 in)

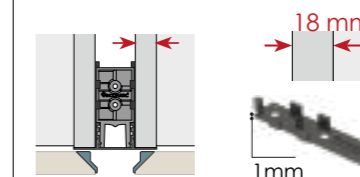


Accessories | Accesorios

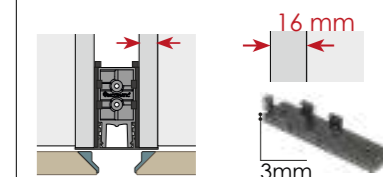
Fixing-balancing gola clip
Clip gola fijación-compensación



Spacer clip-gola 1mm
Suplemento clip-gola 1mm



Spacer clip-gola 3mm
Suplemento clip-gola 3mm



Universal fixing angle
Escuadra universal de fijación



Exterior 90° decorative corner
Terminal esquina 90°



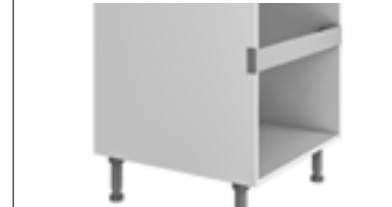
Connector plate
Pletina de unión



Chamfered corner
Esquina chaflán



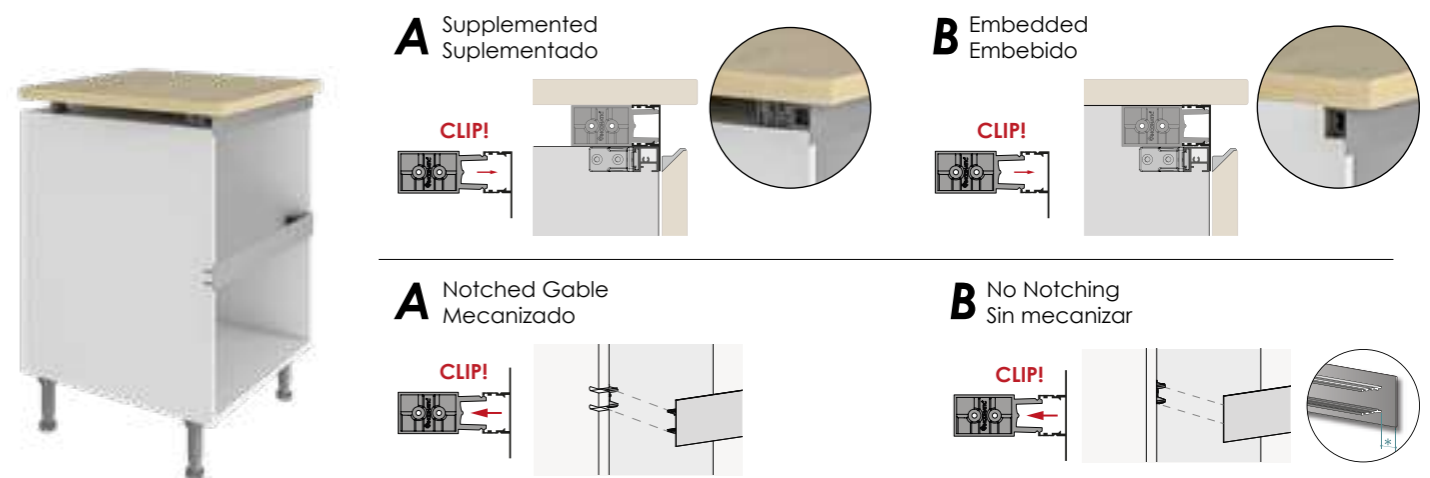
Caps (dishwasher)
Terminal lavavajillas



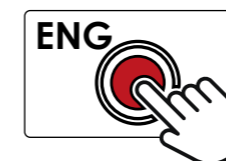
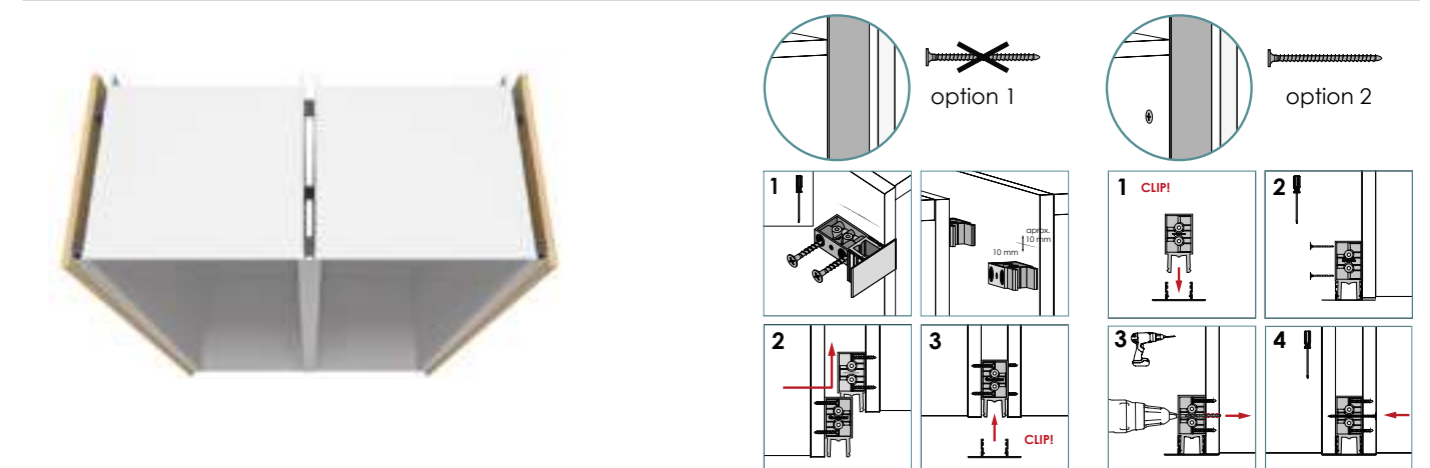
Kit Ventilation induction Flat Gola
Kit Ventilación inducción Gola Plano



HORIZONTAL



VERTICAL



How to place your order?
¿Cómo hacer tu pedido?

