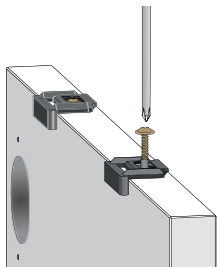


1

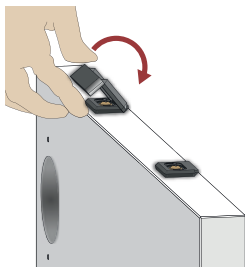
Colocar referencia en la cara exterior y atornillar.
Place the reference from the front side and screw.

Poser l'indicateur de position à la face frontale de la porte et visser



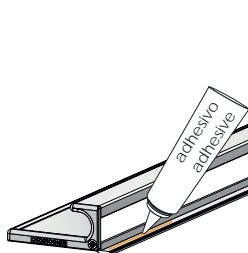
2

Quitar referencias
Remove references
Retirer les indicateurs de position



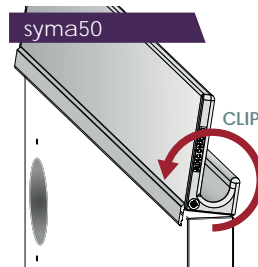
3

Aplicar adhesivo
Apply adhesive
Appliquer l'adhésif



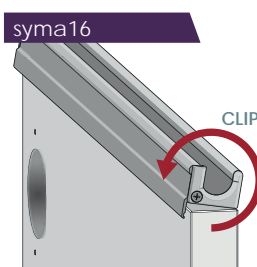
4

Colocar desde la cara exterior
Place the handle from the front side.
Situér le pogné retenant par la face extérieure de la porte

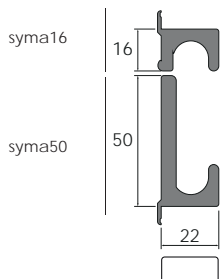


5

Girar hacia la cara interior hasta oír ¡clip!
Push handle down towards the back side until you hear Clip!
Tourner jusqu'au clic

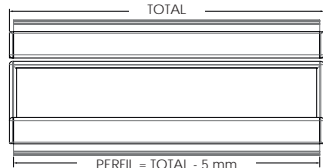


Medidas a considerar
Measurements to consider
Mesures à prendre en compte



Grosor de la puerta superior a 18 mm
Door's thickness higher than 18 mm
Épaisseur de la porte supérieur à 18 mm

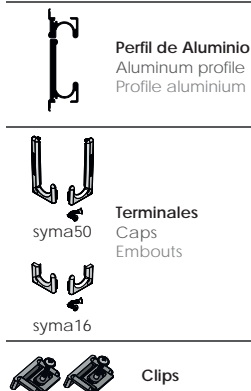
Longitud tirador - número de clips
Handle length - number of clips
Longueurs de poigné - numéro de clips



Longitud perfil | Profile length | Longueur profilé = TOTAL - 5 mm

- | | |
|---------|---|
| 2 clips | tiradores menores de 700 mm
handles under 700 mm
poignées inférieures à 700 mm |
| 3 clips | tiradores de 800 a 1600 mm
handles from 800 up to 1600 mm
poignées de 800 à 1600 mm |
| 4 clips | tiradores mayores de 1700 mm
handles longer than 1700 mm
poignées supérieures à 1700 mm |

Componentes
Components
Composants



Acabados
Finishes
Finitions

- | | | | |
|----|---|----|---|
| 35 | plata mate
matt silver
argent mat | 05 | inox grata repulido
inox - champagne
inox - champagne |
| 04 | plata brillo
chrome - electropolished
chrome - electro-poli | 52 | anodizado negro
gloss black - anodized
noir brillant - lacqué |
| 01 | lacado blanco
gloss white - lacker
blan brillant - laqué | | |

Customization

Longitud lámina decorativa
= longitud perfil - 1 mm
Decorative sheet length
= profile length - 1 mm
Longueur lamme decoratif
= longueur profilé - 1 mm

