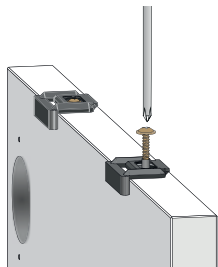


1

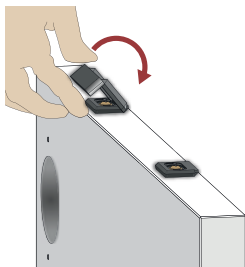
Colocar referencia en la cara exterior y atornillar.  
Place the reference from the front side and screw.

Poser l'indicateur de position à la face frontale de la porte et visser



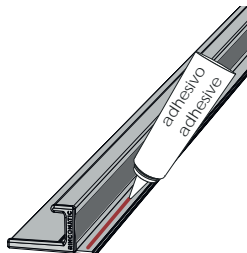
2

Quitar referencias  
Remove references  
Retirer les indicateurs de position



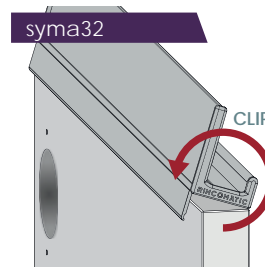
3

Aplicar adhesivo  
Apply adhesive  
Appliquer l'adhésif



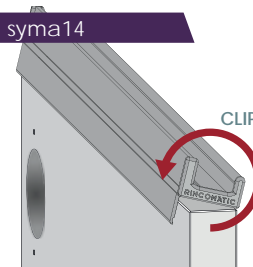
4

Colocar desde la cara exterior  
Place the handle from the front side.  
Situier le pogné retenant par la face extérieure de la porte

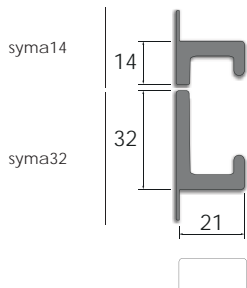


5

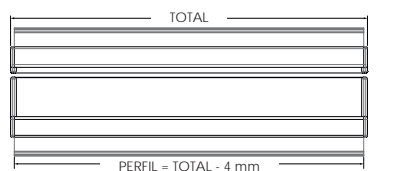
Girar hacia la cara interior hasta oír ¡clip!  
Push handle down towards the back side until you hear Clip!  
Tourner jusqu'au clic



Medidas a considerar  
Measurements to consider  
Mesures à prendre en compte



Longitud tirador - número de clips  
Handle length - number of clips  
Longueurs de poigné - numéro de clips



Longitud perfil | Profile length | Longueur profilé = TOTAL - 4 mm

- 2 clips — tiradores menores de 700 mm  
handles under 700 mm  
poignées inférieures à 700 mm
- 3 clips — tiradores de 800 a 1600 mm  
handles from 800 up to 1600 mm  
poignées de 800 à 1600 mm
- 4 clips — tiradores mayores de 1700 mm  
handles longer than 1700 mm  
poignées supérieures à 1700 mm

Componentes  
Components  
Composants



**Perfil de Aluminio**  
Aluminum profile  
Profile aluminium



syma32  
**Terminales**  
Caps  
Emboutis



syma14



**Clips**

Acabados  
Finishes  
Finitions

**35** plata mate  
matt silver  
argent mat

**50** inox mate  
matt inox - champagne  
inox mat - champagne

**04** plata brillo  
chrome - electropolished  
chrome - electro-poli

**52** anodizado negro  
gloss black - anodized  
noir brillant - lacqué

**01** lacado blanco  
gloss white - lacker  
blanc brillant - laqué

Grosor de la puerta superior a 18 mm  
Door's thickness higher than 18 mm  
Épaisseur de la porte supérieur à 18 mm